

## Security Instructions

Read the instructions very carefully before the first use and keep it for next uses.

Any use not in accordance with the instructions will free the manufacturer from any responsibility.

The PerfectDry Lux® must be used by a person with full intellectual capacities. No other restriction applies to the user.

Keep out of reach of children.

Any intervention, other than usual cleaning and maintenance from the user, must be operated by the Aftersales Service or a professional.

Never put your PerfectDry Lux®, power supply or cable under water or any other liquid. If the power plug or the cable are damaged, do not use the device. Replace your power supply with an original one. Never use detergent or corrosive product to clean your PerfectDry Lux®.

**Warning : Any use not in accordance with these instructions will cancel the warranty.**

**The manufacturer cannot be held responsible for damages caused by a misuse or bad manipulation of the product.**

## Description

The PerfectDry Lux® is an electronic device for the maintenance and the storage of all kind of hearing aids.

This maintenance is ensured by the combination of a forced-air fan drying system and UV-C rays disinfection.

### Note:

- The UV-C lamp is a surface disinfectant and it has few or no penetrating qualities, which means it cannot damage the earmold or plastics of the hearing aids.

## UV-C disinfection

The PerfectDry Lux® is equipped with a short emitting waves UV-C lamp, whose 360° circular disposition enables to reach all the surfaces of the hearing aids.

The exposition of surfaces to the UV-C light allows to destroy 99% of fungi and bacteria, and dramatically reduces itchiness and infections of the ear canal.

The lamp will turn itself on during the first five minutes of the drying cycle, then turn itself off automatically.

## Dehumidification - Drying

The PerfectDry Lux® is equipped with a forced-air fan drying system, which enables to reduce the power and time necessary for the drying cycle.

The temperature of the drying chamber is controlled by an electronic system in order to maintain a constant temperature of 45°C, whatever the ambient temperature surrounding the device, and to prevent the hearing aids from any damages.

## Technical data

### Features

- External dimensions l x h x p (mm): 92 x 48 x 75
- Internal dimensions l x h x p (mm): 70 x 21 x 51
- Weight (g): 160
- Power supply: 5Vdc / 0,5A
- Maximum power: 2.5W
- Stand by power: <0.02W
- UV-C wavelength: 253.7nm
- Acoustic Level <20 dBA
- Drying temperature: 45°C +/-3
- Operating temperatures: from 12° to 40°C
- Storage conditions: from -20° to 65°C
- Software Version 01.00
- USB cable length: 1.5m


### Power connector

- Input: 100-247Vac - 50-60Hz - 0.15A
- Output: 5Vdc / 1A


## Identifying information


You will find the data sheet under your PerfectDry Lux®.


- V Abbreviation signification:  
Volts (Power supply tension)
- A Ampère (Energy consumption)

 USB power symbol

 Inside use

 This product is an ABS production recycled to 7%

 This product complies with the applicable European directives.

 **ELIMINATION**  
Throw the old material out in an ecological way.  
The old devices are made with recycling material which must be recycled. Be careful to throw your old devices out in the right recycling system.

## User Instructions

# PerfectDry Lux®



UV-C disinfection  
and quick dehumidification  
of hearing aids

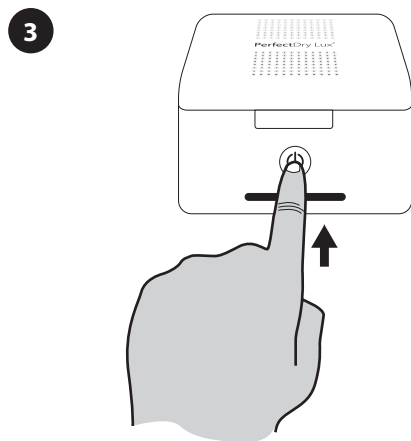
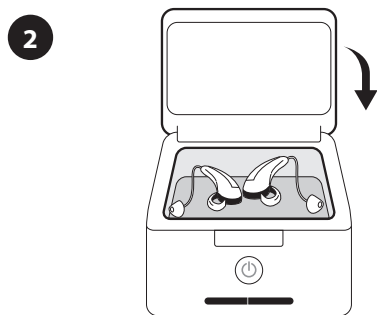
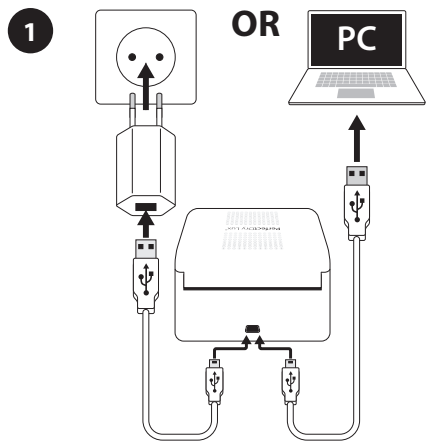
## Guarantee

PerfectDry Lux® is guaranteed for 36 months, except for the power supply (24 months), from the date of purchase. For any failure or breakdown, contact your hearing aid specialist. A purchase proof will be asked from Aftersales Service during the guarantee period. This guarantee will not be valid for any use not in accordance with these

instructions, for an accident, a liquid introduction, a negligence, a maintenance lack or any other circumstance caused by the user. Furthermore the guarantee will not be valid for any problem caused by lightnings or a variation in the electrical voltage. As a precaution we recommend to unplug the device in case of storms.

### This box set includes:

- 1 PerfectDry Lux®
- 1 USB cable
- 1 Power connector
- 1 User manual



➔ Touch x1 = Fast cycle  
30 min.



➔ Touch x2 = Intensive cycle  
1h



1 Plug the USB power supply on the back of the PerfectDry Lux®. Then plug the cable on the USB slot or on the electrical socket. The pilot lights blink, indicating that the device is on.

2 Before placing your hearing aids into the PerfectDry Lux®, clean and wipe them to remove earwax and impurities. If it is possible, place your hearing aids with the battery housing open for an optimum dehumidification process. Close the lid of the PerfectDry Lux®.

3 Touch the start button to select your drying cycle:

➔ Touch once to start a fast drying cycle of 30 minutes, the light on the left turns on.

➔ Touch twice to start a intensive drying cycle of 1h, both lights turn on.

After one minute, without any action, the PerfectDry Lux® will activate the stand-by mode and the lights will turn themselves off. Touch the start button once to reactivate the device, then select the drying cycle you need.

The PerfectDry Lux® will stop automatically at the end of the drying cycle and the pilot lights will turn themselves off. If you need to stop an ongoing drying cycle, you simply need to open the lid and it will stop automatically (security feature).

### Precaution of use

- Place the PerfectDry Lux® on a stable and dry base.
- Do not stare directly at the UV-C lamp located inside the drying chamber.
- To unplug the device from the socket, pull on the power plug directly but do not pull on the power cord.

### Maintenance advice

Clean with a soft cloth. Do not use any powerful or abrasive cleaning products to clean the PerfectDry Lux®. Do not spray any liquid into the box. Keep the PerfectDry Lux® with the lid closed when you are not using it to avoid the deposit of impurities on the UV-C lamps.

MG0NOTLUX-UK\_141020

PerfectDry Lux®